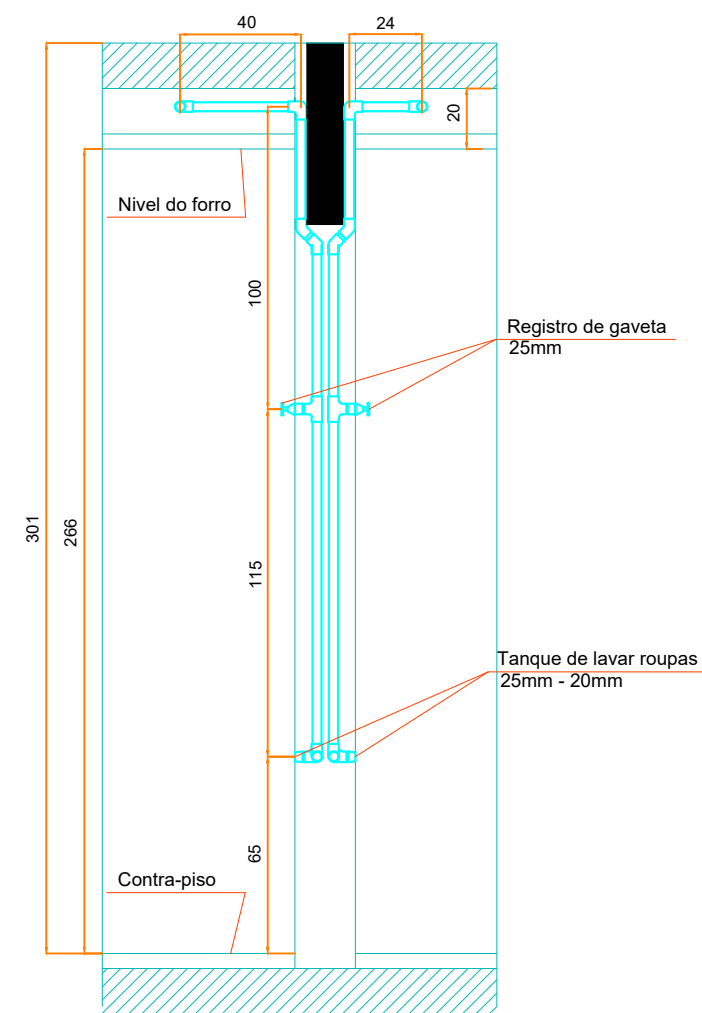
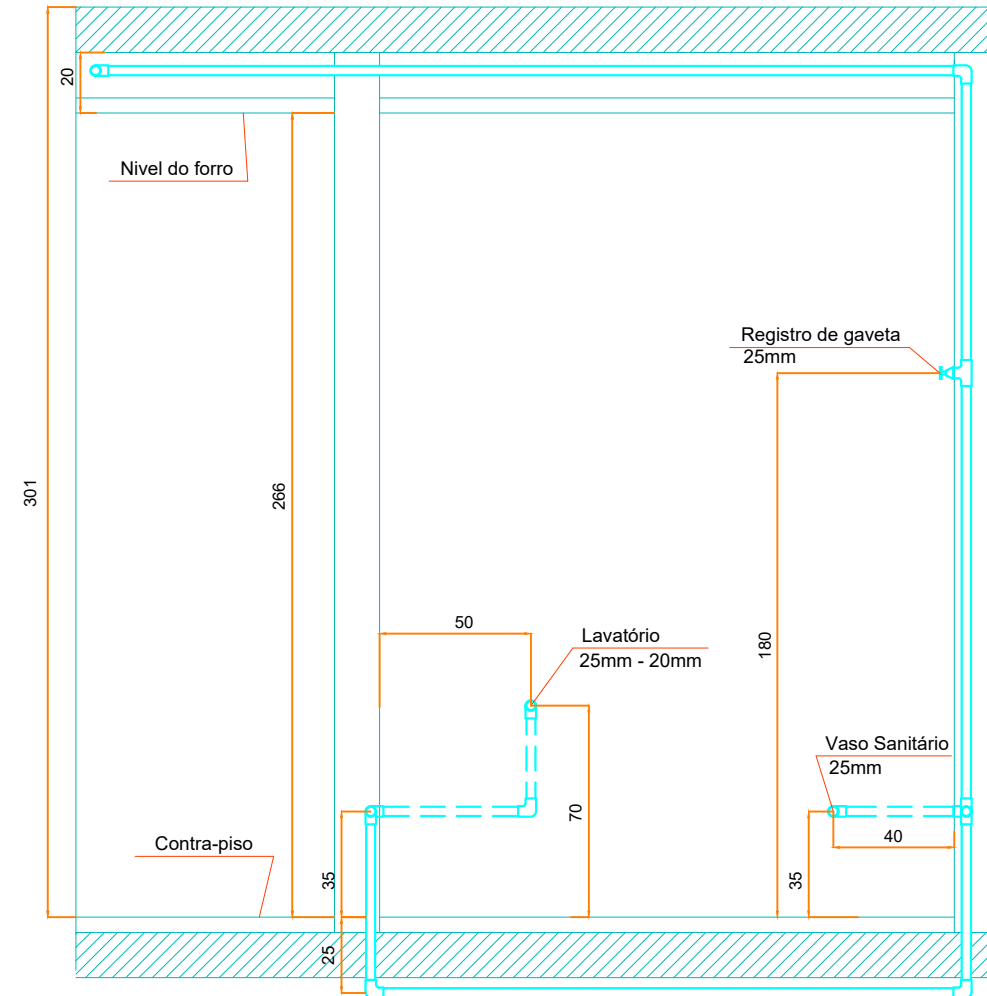


## Corte das Cozinhas

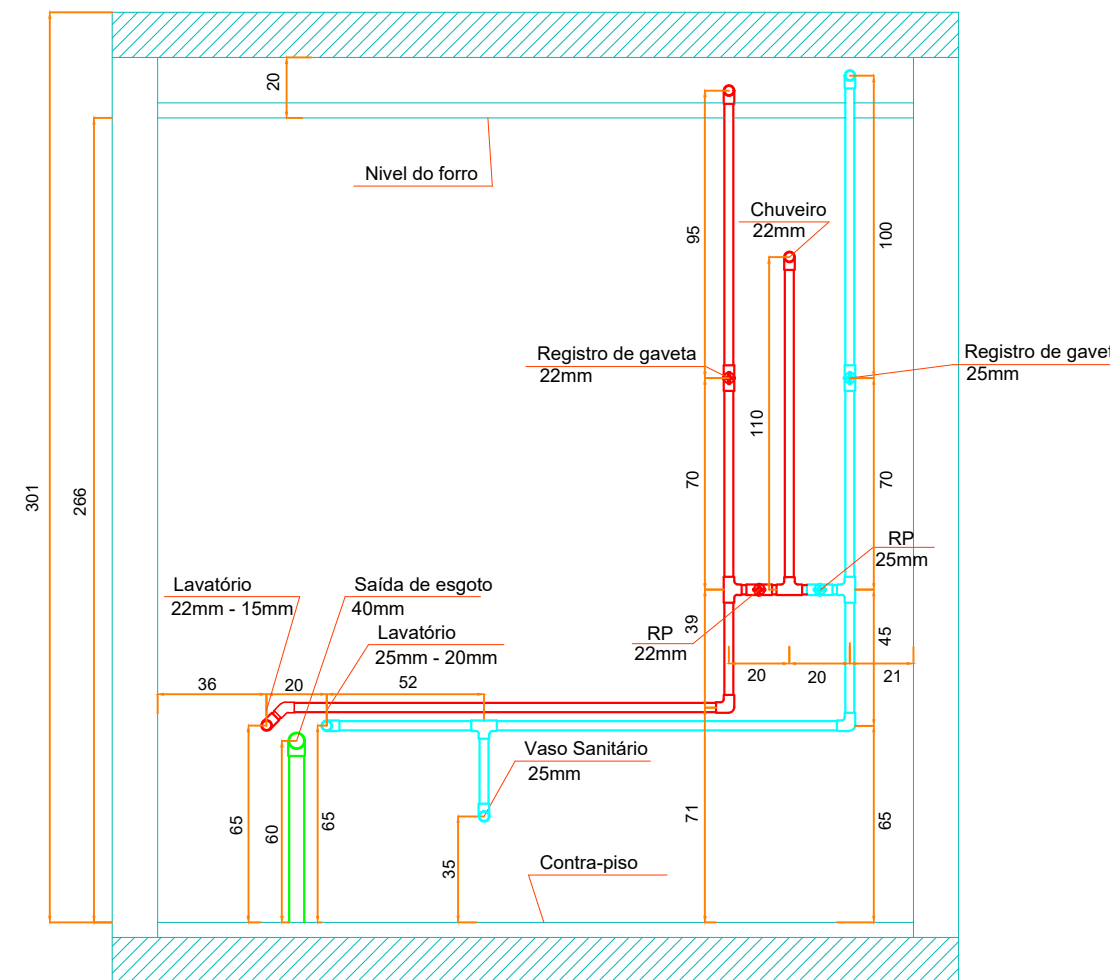


## Corte dos Lavabos

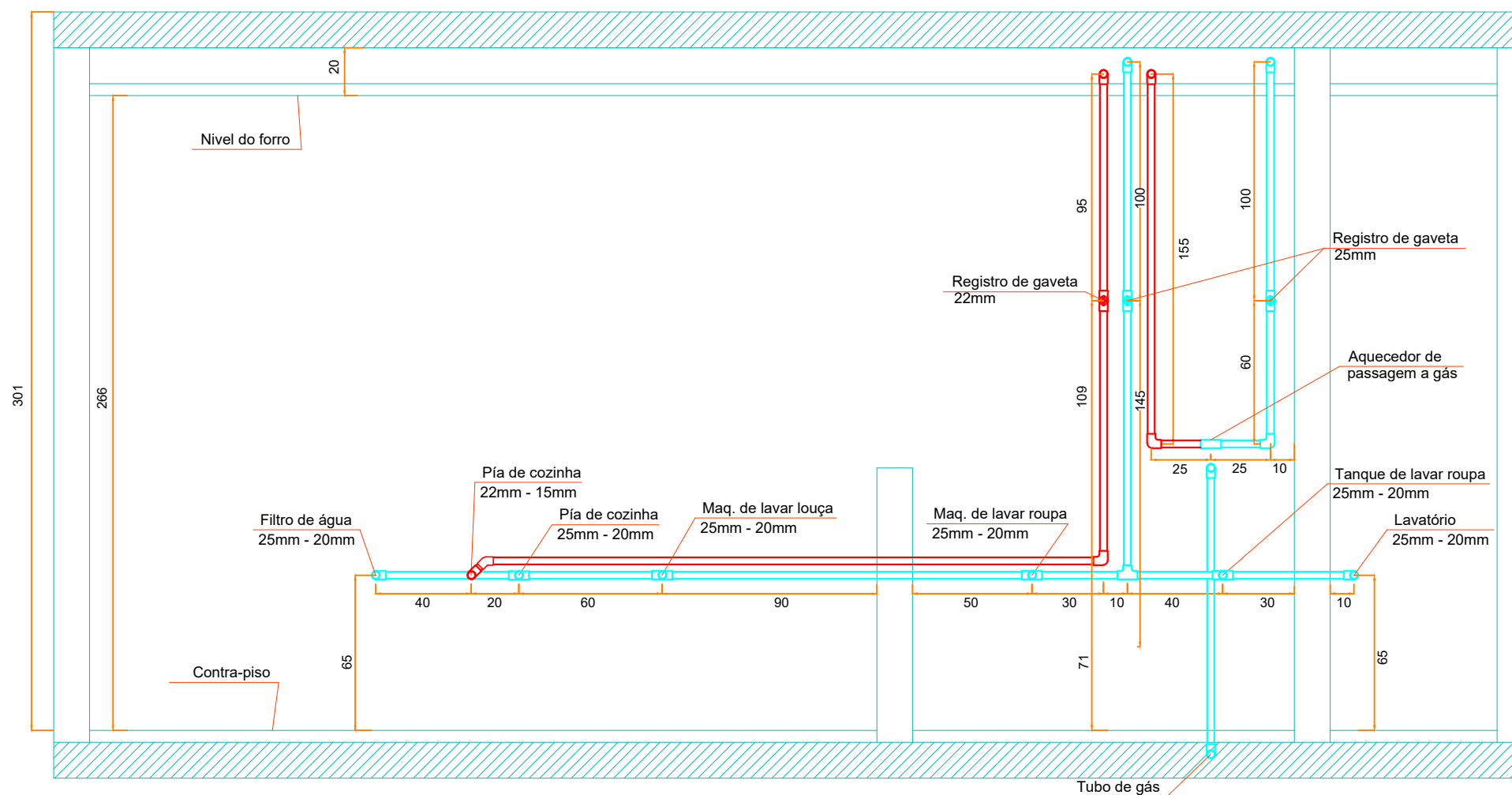
apto 402 a 1002 e 403 a 1003



## Corte dos Banheiros

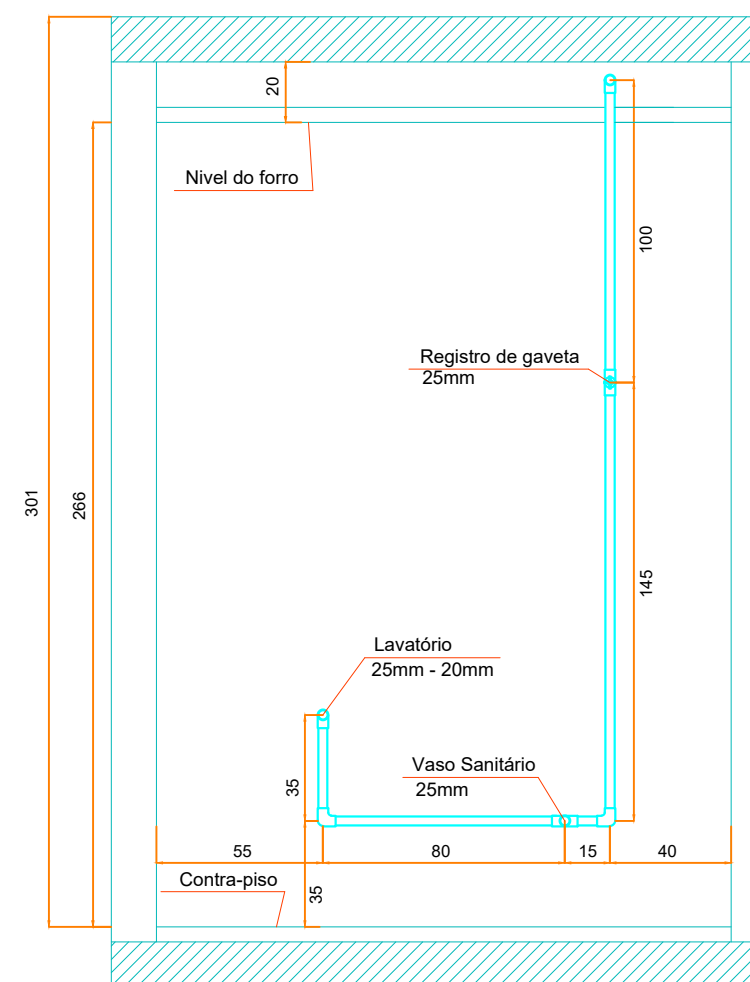


## Corte das Cozinhas



## Corte dos Lavabos

apto 401 a 1001 e 404 a 1004



PROJETO: <b>PROJETO HIDRÁULICO</b>			
OBRA: <b>EDIFÍCIO ALAMEDA PROVENCE</b>			
LOCAL: <b>RUA SANTO AMARO, S/N . CAMBORIÚ, SC</b>			
RESPONSÁVEL TÉCNICO:		PROPRIETÁRIO:	
PROJETO: <b>ALVARO GUIMARÃES VIEIRA DA SILVA</b> ENG. CIVIL - CREA 27.794-5		CARELLI PROPRIEDADES CONSTRUTORA E INCORPORADORA LTDA CNPJ: 17.008.758/0001-79	
DATA: <b>04/06/15</b>	DATA ULT. ATUALIZ.:	ESCALA: <b>1:25</b>	FOLHA:
REFERÊNCIA: <b>CORTES DO TIPO.</b>			<b>H-12/15</b>